

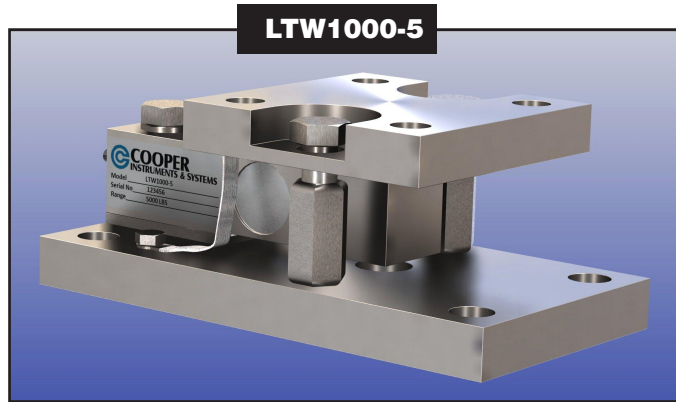
LTW1000-5 TANK WEIGHING ASSEMBLY

The LTW1000-5 stainless steel, hermetically sealed weigh module is ideal for tank, bin and hopper weighing. It is especially designed for hopper, mixer and platform scales.

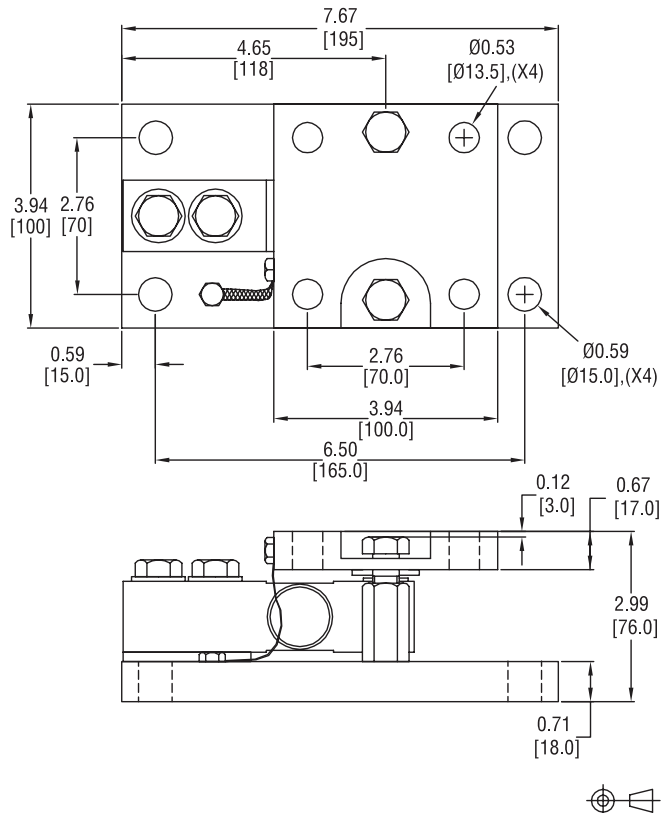
- **CAPACITY RANGE: 500 LB TO 5000 LB**
- **STAINLESS STEEL CONSTRUCTION**
- **ENVIRONMENTAL PROTECTION IP68**
- **OPTIMIZED STRUCTURE DESIGN FOR EASY INSTALLATION**
- **LOW PROFILE DESIGN**

SPECIFICATIONS

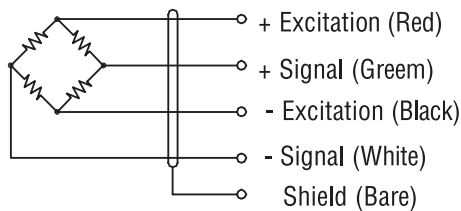
CAPACITIES:	500-5000 lb
FULL SCALE OUTPUT:	2.0 ±0.25% (FS) mV/V
NON-LINEARITY:	≤±0.023% FS
HYSTERESIS:	≤±0.023% FS
NON-REPEATABILITY:	≤±0.023% FS
CREEP @ 30 MIN:	≤±0.030% FS
ZERO BALANCE:	±0.06 mV/V
TEMPERATURE RANGE:	
OPERATING:	-10...+40 °C
TERMINAL RESISTANCE:	
INPUT RESISTANCE:	386±10 Ω
OUTPUT RESISTANCE:	350±5 Ω
EXCITATION VOLTAGE:	VDC10...15
INSULATION RESISTANCE	
@ 50 VDC	≥2000 MΩ
SAFE OVERLOAD LIMIT:	150% FS
ULTIMATE LOAD:	300% FS
CABLE LENGTH:	m6
SEAL TYPE:	IP68
ELEMENT MATERIAL:	Stainless Steel
OPTION:	LTW1000-3 Plated Steel



Dimensions



Wiring



Cable :5.1mm dia. 4 Conductor cable.